

THE "ANYWHERE ANYTIME LAB" SCFC20 MOBILE FXR LAB

FROM STORAGE TO ACTION,
GET PORTABILITY AND FAST
RESULTS WHEREVER YOUR
RESEARCH NEEDS TO BE.

IT'S A COMPLETE FLASH X-RAY
LAB IN A 20' ISO CONTAINER.
READY TO GO & READY TO USE
WITH TRIGGER-CERTAINTY.

C20 advantages

- Move your system to and within your test site
- Weather robust housing for your FXR system
- CE marked
- Includes air circulation fan and heating
- Secure system storage
- Heavy duty equipment mounting brackets
- Service work bench

Core components

Mobile FXR system
RPS30 service station
CAD700 series compressor
IB100 safety module

Featured models

SCF150
SCF300
SCF450
SCF450S

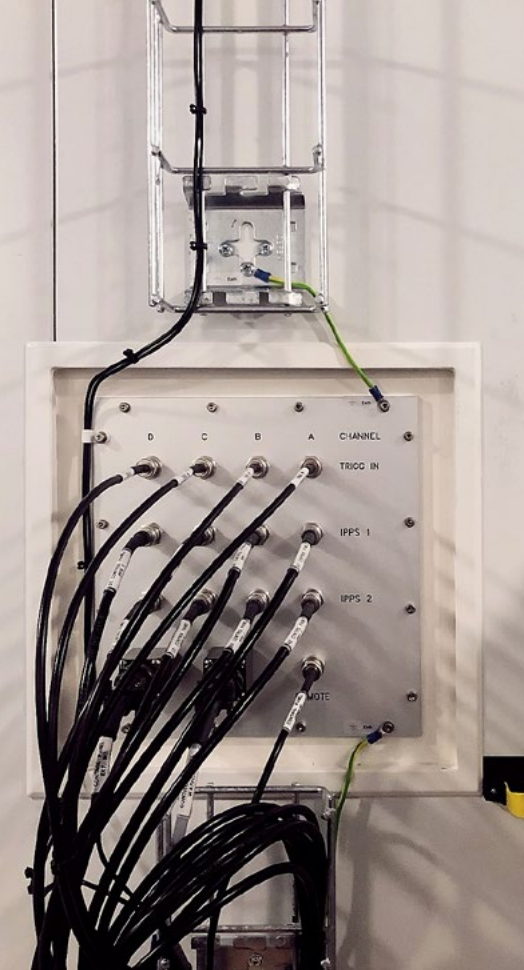
20' ISO Container dimensions (LWH)

20 x 8 x 8.5 ft (6.06 x 2.43 x 2.59 m)



www.scandiflash.com





Speed up your time-to-result with a Scandiflash Mobile flash X-ray Lab

A complete flash X-ray lab in a customized 20-foot ISO container, ready to go with trigger certainty: portable, fast, and flexible. Run your experiments anywhere and see your results faster than you can say "sex laxar i en laxask" (that's an old Swedish tongue twister).

Portability: anywhere

Our transport-ready solution lets you take your lab wherever you need to go. For those using flash X-rays in extreme outdoor environments, whether it's within or between sites, easy portability and safe storage are must-haves. The ultimate "anywhere anytime lab", our Mobile FXR Lab houses a total flash X-ray system inside a customized, transportable 20-foot ISO container complete with all the details and fittings necessary for your research.

Each lab is built on-demand and outfitted with the exact flash X-ray system of your choice – SCF150, SCF300, SCF450 and SCF450S. Other configurations are possible, just ask and we'll work out the specifications.

Everything you need is included in the Mobile FXR Lab. The system in its transport configuration is distributed in the lab in such a way that the center of gravity coincides with the center of the container.

The Mobile FXR Lab is also an ideal solution for storing your instruments between tests.

Results: faster

Fast results are a top priority. The Mobile FXR Lab is a research center housed in a reinforced, insulated, and heated container. Your flash X-ray system can remain set up in the lab ready to use at remote testing sites. Your instruments remain secured and safe, the system is quick and easy to set up and alter, so you can have more time for your research – that means faster results.

Flexibility: built in

Multiple access ports for flash X-ray tubes on two sides of the lab make it easy to adjust and reconfigure for experiments. Each port has an easy-to-mount/dismount rubber-sealed hatch to protect the interior of the lab from the often harsh outdoor environment.

Each pulser can be quickly adjusted in position based on the choice of access ports being used. They're mounted on wheels and attached to the walls via guide rails located on the long sides of the lab.

Housing a flash X-ray system inside a mobile lab could be a real challenge with cables hanging about and laying on the floor. No worries. This lab is equipped with cabling guides to ensure smooth operation and a safe

working environment. Cabling feedthroughs are led through the wall via marked connector boards, which include connectors for the interlock safety system and cables allowing operation of the system via the control computer using an ethernet extension cable up to 2000 meters from the lab.

Reliability: best practices

The SCFC20 Mobile FXR Lab is CE marked and includes an FXR IB100 safety module. More modules can be added as needed. The lab is supplied electrically via a mains socket connector linked via a fuse box to the outlets supplying everything from heaters to the FXR system inside the container. The FXR safety module is linked to the doors of the container and is easily connected to safety components located at the perimeter of the experiment or test site via the SCFC20 feedthrough panel that enables easy connection between the FXR system control unit and other parts of the system.

The interior of the lab includes a fan for air circulation, a rugged durable aluminum floor and a work bench that can be used for work, maintenance, and storage of system equipment. We've even included floor fastening points to secure everything from X-ray tubes to additional experimental specific items when the lab is being transported.